

TRIG's purpose is to create shareholder value from a portfolio of renewable energy generation and supporting infrastructure, contributing towards a cleaner and more secure future.

TRIG seeks to deliver an attractive total NAV return through resilient income and long-term capital growth

- 
Balanced portfolio
 A 2.3GW diversified portfolio of wind, solar and battery storage assets that provides measured, defensive exposure to the long-term energy transition.
- 
Responsible investment
 A clear self-funded growth strategy incorporating debt capacity management, disciplined portfolio rotation and active portfolio management.
- 
Operational excellence
 Proactive and disciplined approach to asset management to enhance value. Dynamic assessment of ESG opportunities and risks.

Our financial and risk management objectives

Deliver long-term, resilient dividends

Increase portfolio capital value through active management

Enhance long-term growth by reinvesting surplus cash

Diversify risk across markets and technologies

Maintain resilience through prudent financial management

Key Statistics

As at 31 March 2026

£1.5bn
Market Cap

11.8% p.a.
Dividend Yield¹

As at 31 December 2025

80+
Number of assets/investments

0.94% p.a.
Operating Expense Ratio²

2.1x / 1.0x
Gross cash cover / Net dividend cover

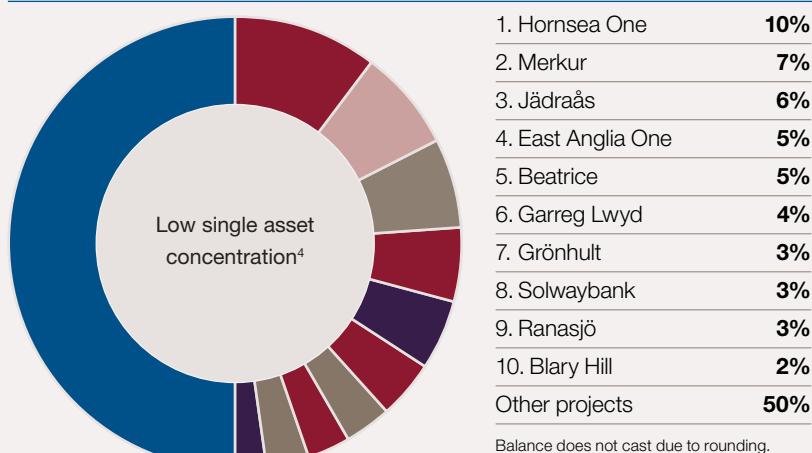
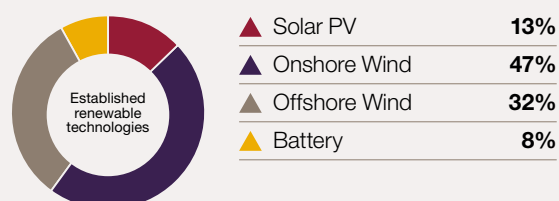
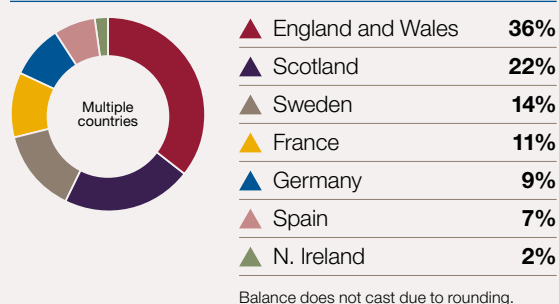
5.4 TWh
of clean electricity generated in 2025

900 MW
development pipeline

A diverse investment portfolio³

TRIG owns a large, diversified portfolio of renewable energy investments, providing investment exposure to established renewables technologies. The portfolio is well positioned to benefit from the significant growth in energy demand across Europe, driven by market developments including accelerated electrification, the build out of data-centres and growing industrial demand for clean energy.

The revenues of the Company's portfolio are correlated to inflation both through subsidies and exposure to energy prices. Disciplined debt management ensures that the portfolio has minimal cash flow exposure to changes in interest rates or refinancing risk, with c.90% of debt being fixed rate and fully amortising in line with the profile of fixed-price revenues. TRIG's Investment Policy can be found on the Company's [website](#).



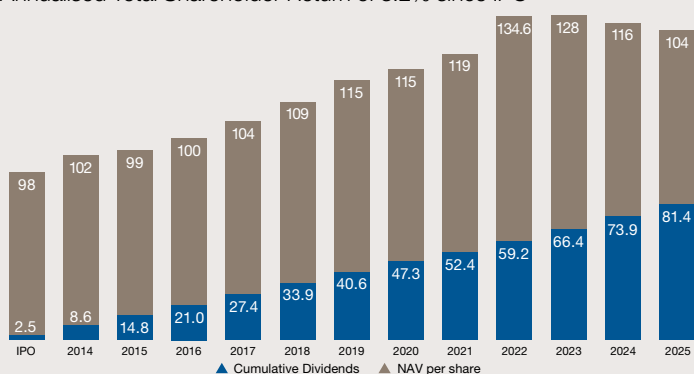
1 The 2026 target represents a 11.8% dividend yield when referenced to the share price at 31 March 2025

2 Expenses of The Renewables Infrastructure Group Limited as a percentage of its Net Asset Value as defined by the Association of Investment Companies

3 Segmentation by portfolio value as at 31 December 2025 on a fully committed basis

4 Colours indicate where each asset is located

Annualised Net Asset Value Return (NAV growth and dividends) of 7.0% since IPO and Annualised Total Shareholder Return of 3.2% since IPO⁵



PAST PERFORMANCE IS NOT A RELIABLE INDICATOR OF FUTURE RESULTS. CAPITAL AND INCOME AT RISK.

Key risks

The Company’s principal risks are managed by the Board and Managers through monitoring and mitigation as appropriate. TRIG continues to have four enduring principal risks with a high residual impact which are:

Political/regulatory risk	Power prices
Production performance	Counterparty credit

These and other risks are considered and expanded on in the Risk and Risk Management section of the 2025 Annual Report.

The Company seeks to mitigate the potential impact of these risks through portfolio construction, which includes diversification across technologies, European countries and counterparties; supported by active management and a conservative approach to balance sheet and financial management.

A commitment to sustainability

Mitigate adverse climate change



1.6m

Number of homes (equivalent) the portfolio powered with clean electricity during 2025⁶

Positively impact the communities in which we work



48

Number of community funds within the TRIG portfolio

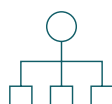
Preserve our natural environment



58

Number of active Environmental Enhancement Projects within the portfolio⁷

Maintain ethics and integrity in governance



0.27

7-day Lost Time Accident Frequency Rate

Company Information

Listing	London Stock Exchange	
Ticker	TRIG.L	
Index inclusion	FTSE All-Share, FTSE 250, FTSE 350 and FTSE 350 High Yield indices	
Registration	Guernsey: 56716	
Dividend payments	Quarterly (March, June, September, December)	
Company year end	31 December	
SEDOL	BBHX2H9	
ISIN	ISIN GG00BBHX2H91	
Registered address	East Wing, Trafalgar Court, Les Banques, St Peter Port, Guernsey.	
Company Secretary and Administrator	Aztec Financial Services (Guernsey) Limited PO Box 656, East Wing, Trafalgar Court, Les Banques, St Peter Port, Guernsey GY1 3PP +44 1481 748 831 E: TRIG@aztecgroupp.co.uk	
Corporate brokers	Investec Bank plc Lucy Lewis +44 (0) 20 7597 4000	BNP Paribas Virginia Khoo +44 (0) 20 7595 9444
Financial PR	Brunswick Group Advisory Diana Vaughton Charles Malissard +44 (0) 20 7404 5959	
Registrar	MUFG Corporate Markets (Guernsey) Limited	

Board of Directors (Non-Executive)

Chair: Richard Morse
 Director (SID): Tove Feld
 Director (ESG Chair): Selina Sagayam
 Director (MEC Chair): Erna-Maria Trixi
 Director (Audit Chair): John Whittle

InfraRed

Investment Manager

InfraRed Capital Partners Limited
 Level 7, One Bartholomew Close
 Barts Square
 London
 EC1A 7BL
 T +44 (0)20 7484 1800

Minesh Shah
 E triginfo@ircp.com
 W www.ircp.com

An established international infrastructure investment manager

Day-to-day management & investment selection

25+ years investment track record

\$13bn equity under management (USD)⁸

5* PRI rating for infrastructure⁹

RES

Operations Manager

Renewable Energy Systems Limited
 Beaufort Court, Egg Farm Lane
 Kings Langley
 Hertfordshire
 WD4 8LR
 T +44 (0)1923 299 200

Chris Sweetman
 E info@res-group.com
 W www.res-group.com

A leading global independent renewable energy company

Operational oversight of the portfolio

40+ years' experience in renewables

29GW+ developed and/or constructed

45GW+ of renewable assets supported

5 Total shareholder return based on a share price plus dividends paid from IPO up to 31 December 2025 on an annualised basis. Relative difference to Annualised NAV Return due to share price discount to NAV of 34% as at 31 December 2025
 6 Values calculated based on actual and curtailed generation for 2025, in accordance with the IFCI Approach to GHG Accounting for Renewable Energy (budgeted energy generation divided by country-specific average energy consumption factor per dwelling)
 7 Operational TRIG sites engaged in pro-active habitat management plans that exceed standard environmental maintenance
 8 Uses a five-year average FX between currency pairs as at 31 December 2025: USD per GBP – 1.2900; USD per EUR – 1.1125. EUM is USD 13.3bn
 9 Principles for Responsible Investment (“PRI”) scores are expressed in stars, with five stars being the maximum. The latest scores were received in 2024 and represent an assessment of InfraRed’s activities for the calendar year 2023. The PRI conducts the largest global assessment on responsible investment; the methodology is available here: www.unpri.org

Disclaimer
 This document has been issued by The Renewables Infrastructure Group Limited “TRIG”. It has been prepared and approved by InfraRed Capital Partners Limited (“InfraRed”) in conjunction with TRIG. This document has been approved as a financial promotion by InfraRed, which is solely responsible for its compliance with applicable UK regulatory requirements in the Financial Conduct Authority’s Handbook. Although InfraRed and TRIG have attempted to ensure that the contents of this document are accurate in all material respects, no representation or warranty, express or implied, is made to, and no reliance should be placed on the fairness, accuracy, completeness or correctness of the information, or opinions contained herein. This document is being distributed to and is directed only at persons who fall within the end “target market” for shares in TRIG (the details of which can be found in the section titled “Information for Distributors” on TRIG’s Consumer Duty webpage). If you do not fall within the end target market for shares in TRIG, you should not treat this document as being distributed to or directed at you. This document is not and should not be construed as an offer to sell or the solicitation of an offer to purchase or subscribe for any investment. The document is intended for information purposes only and does not constitute investment advice. Past performance is not a guide to future performance. The value of any investment or the income deriving from them may go down as well as up and you may not get back the full amount invested. There are no guarantees that dividend and return targets will be met. An investment in TRIG will involve certain risks. There can be no assurance that TRIG will achieve comparable results to those contained in this document, that any targets will be met or that TRIG will be able to implement its investment strategy.